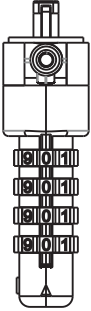

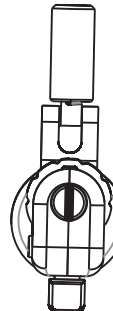
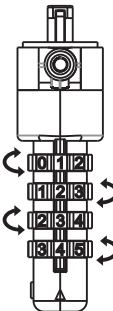
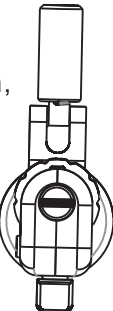


## Setting the combination

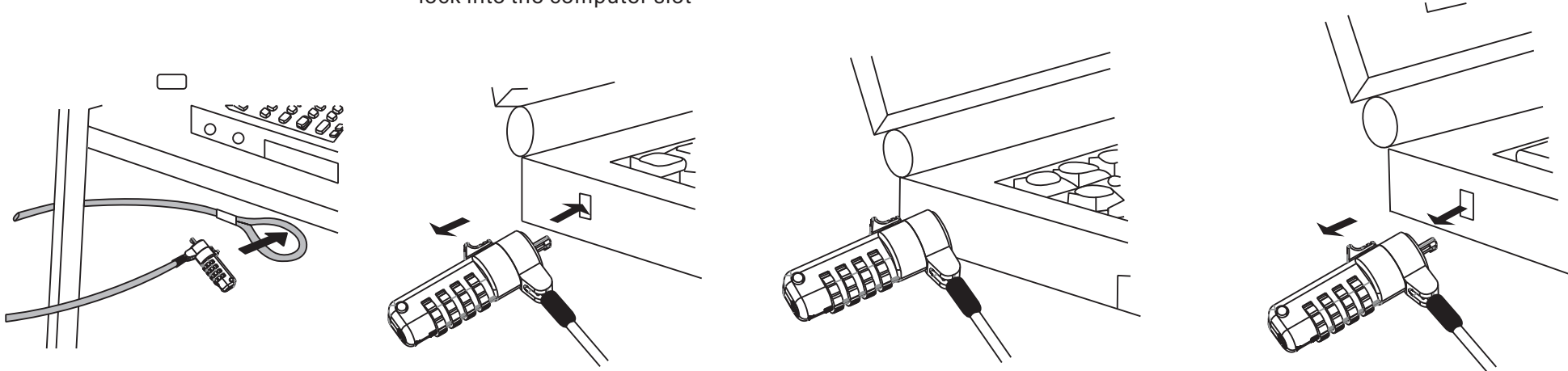
- 1、 The factory preset combination is 0-0-0-0  


Positive
- 2、 Rest the combination press the back side button, then turn left 90°, rollover the wheel to set the new combination  



- 3、 Set your 4-digit combination, turn the button right'm 90°, then the button release to regular position, your combination is now set  


## Instruction(The lock is available for 3X7mm and 3X5mm lock slot)

## How to open

- 1、 Find an object (e.g table) to secure the lock and run the lock through the cable loop
- 2、 Turn the number to your own set combination, Push back the button at the same time insert the lock into the computer slot
- 3、 Release the button and mix the number combination your equipment is now locked
- 4、 Turn the number to your own set combination, at the same time remove the lock out from the slot



Memorize your combination or write it down for future reference

□ - □ - □ - □

**Important**



No master combination or key is available from the manufacturer, should the user combination be forgotten or lost!